

Guidelines for Applicants to the 2027 Master's/Doctoral Courses

Department of Advanced Materials Science

Graduate School of Frontier Sciences,
The University of Tokyo

Examination Schedule

◆ Master's course, Ordinary Examination and Special Selection for Applicants with Overseas Education

[Schedule A]

Application period

From Thursday, June 4 to Wednesday, June 10, 2026

Examination date

1st-stage examination	Specialized subject	From 13:40 to 15:55, on Tuesday, August 18, 2026
2nd-stage examination	Oral examination	on Monday, August 24, 2026

◆ Doctoral course, Ordinary Examination and Special Selection for Applicants with Overseas Education

[Schedule A]

Application period

From Thursday, June 4 to Wednesday, June 10, 2026

Examination date

Specialized subject	From 13:40 to 15:55, on Tuesday, August 18, 2026
Oral examination	on Tuesday, August 25, 2026

[Schedule B only for Special Selection for Applicants with Overseas Education]

Application period

From Wednesday, November 11 to Tuesday, November 17, 2026

Examination date

Specialized subject	Monday, January 18, 2027
Oral examination	Tuesday, January 26, 2027

◆ Special Selection for Applicants with Professions for Doctoral course

[Schedule A]

Application period

From Thursday, June 4 to Wednesday, June 10, 2026

Examination date

Oral examination on Thursday, August 25, 2026

Contents

- 1 Overview of Department of Advanced Materials Science
- 2 Introduction of Faculty Members
- 9 Master's course,
Ordinary Examination and Special Selection for Applicants with Overseas Education, Schedule A
- 11 List of Application Documents (Master's course) / Inquiry Sheet (Master's course)
- 12 Doctoral course,
Ordinary Examination and Special Selection for Applicants with Overseas Education, Schedule A
- 14 Doctoral course,
Special Selection for Applicants with Professions (only for Doctoral course, Schedule A)
- 16 List of Application Documents (Doctoral course, Schedule A) / Inquiry Sheet (Doctoral course, Schedule A)
- 18 Doctoral course, Special Selection for Applicants with Overseas Education, Schedule B
- 20 List of Application Documents (Doctoral course, Schedule B) / Inquiry Sheet (Doctoral course, Schedule B)
- 22 Examination guidelines
- 23 Venue



Course / Field of study / Laboratory

Course	Field of study	Laboratory
Applied Physics	Correlated-Matter Physics	Arima & Tokunaga Lab.* ¹
	Quantum Phase of Matter	Shibauchi & Ishida Lab.
	Single Atom Molecule Science	Sugimoto Lab.
	Condensed Matter Physics	Yoshimi Lab.
		Yoneda Lab.
Advanced Optical Science	Ideguchi Lab.	
New Materials and Interfaces	Soft Device Science	Takeya & Tamai Lab.
		Imajo Lab.
	Energy-conversion Quantum Science	Uchida & Nakanishi Lab.
Molecular Ionics	Suzuki & Y. Yamashita Lab.	
Materials Design and Processing	Process Science for Advanced Materials	Ito Lab.
	High-Temperature Materials Design	Mitarai Lab.
	Nano-Space Function Design	Kita Lab.
Solid State Physics and Chemistry (The Institute for Solid State Physics)	Advanced Measurements	M. Yamashita Lab.
	Diverse Condensed Matter Science	Lippmaa Lab.
		K. Inoue Lab.* ²
		Takagi Lab.
	Materials Design	Okamoto Lab.
		Yamaura Lab.
		Hirose Lab.
	Nanoscale Quantum Science	Miwa Lab.
	International MegaGauss Science	Matsuda Lab.
		Miyata Lab.
	Laser and Synchrotron	Okazaki Lab.
	Synchrotron Radiation Science	Harada Lab.
Neutron Science	Masuda Lab.	
	Mayumi Lab.	
Concurrent position (Information Technology Center)	Interdisciplinary Information Science	Nagai Lab.
Synchrotron Radiation Research (SPring-8)	Synchrotron Radiation Science	I. Inoue Lab.

*¹ No recruitment for Master's course students

*² No recruitment for Doctoral course students

Overview of Dep. Advanced Materials Science

The Department of Advanced Materials Science (AMS) consists of the three majors of the Graduate School of Engineering, "Applied Physics", "Materials Engineering", and "Applied Chemistry", and the Institute for Solid State Physics participates as a cooperative course. It was newly established in April 1999 as one of the four majors in the Graduate School of Frontier Sciences, the University of Tokyo.

So far, we have been working as a new 21st century graduate school major at this Kashiwa campus.

Currently, we become the world's largest research center for interdisciplinary materials science research bases and are implementing leading materials science research, which has been done in collaboration with RIKEN, National Institute of Advanced Industrial Science and Technology (AIST), National Institute for Materials Science (NIMS), SPring-8 (synchrotron radiation facility, and Nano-Terace (3GeV high-brilliance synchrotron radiation facility). We are conducting a new scheme of materials science education based on academic fusion, aiming to develop researchers and engineers who can play an active role on the international stage in the future. Let's learn and practice cutting-edge science and disseminate it to the world with us.

Faculty members

Applied Physics



Arima & Tokunaga Lab.

Correlated-Matter Physics

Professor

Taka-hisa Arima

Keywords

Cross-correlated phenomena, Non-reciprocal phenomena, Neutron scattering, Synchrotron x-ray scattering

e-mail arima@k.u-tokyo.ac.jp

TEL 04-7136-3805

*1 No recruitment for Master's course students



Arima & Tokunaga Lab.

Correlated-Matter Physics

Associate Professor

Yusuke Tokunaga

Keywords

Cross-correlated phenomena, Magnetoelectric effect, Strongly correlated electron systems, Novel material functions

e-mail y-tokunaga@k.u-tokyo.ac.jp

TEL 04-7136-3770

*1 No recruitment for Master's course students



Shibauchi & Ishida Lab.

Quantum Phase of Matter

Professor

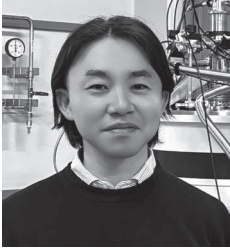
Takasada Shibauchi

Keywords

Superconductivity, Quantum critical phenomena,
Low temperature physics, Topological quantum physics

e-mail shibauchi@k.u-tokyo.ac.jp

TEL 04-7136-3774



Shibauchi & Ishida Lab.

Quantum Phase of Matter

Lecturer

Kousuke ishida

Keywords

Strongly correlated electron systems, Quantum critical point,
Quantum fluctuations, Singularities

e-mail k.ishida@edu.k.u-tokyo.ac.jp

TEL 04-7136-4048



Sugimoto Lab.

Single Atom Molecule Science

Professor

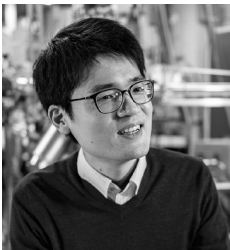
Yoshiaki Sugimoto

Keywords

Surface science, Atom manipulation, Atomic-scale
characterization, Atomic force microscopy

e-mail ysugimoto@k.u-tokyo.ac.jp

TEL 04-7136-4058



Yoshimi Lab.

Condensed Matter Physics

Associate Professor

Ryutato Yoshimi

Keywords

Functional materials development, Molecular beam epitaxy,
Topological quantum physics

e-mail r-yoshimi@edu.k.u-tokyo.ac.jp

TEL 04-7136-3752



Yoneda Lab.

Condensed Matter Physics

Associate Professor

Jun Yoneda

Keywords

Semiconductor qubits, Electron spin manipulation,
Nanodevice physics, Quantum computers, Quantum technology

e-mail j.yoneda@edu.k.u-tokyo.ac.jp

TEL 04-7136-4133



Ideguchi Lab.

Advanced Optical Science

Professor

Takuro Ideguchi

Keywords

Laser, Spectroscopy, Microscopy, Biophotonics

e-mail ideguchi@edu.k.u-tokyo.ac.jp

TEL 04-7136-3771



Takeya & Tamai Lab.

Soft Device Science

Professor
Jun Takeya

Keywords

Organic electronics, Organic semiconductor physics,
Organic chemistry, Organic device

e-mail takeya@k.u-tokyo.ac.jp

TEL 04-7136-3790



Takeya & Tamai Lab.

Soft Device Science

Associate Professor
Yasunari Tamai

Keywords

Organic electronics, Organic photophysics/photochemistry,
Ultrafast spectroscopy, Organic device

e-mail tamai@edu.k.u-tokyo.ac.jp

TEL 04-7136-3765



Imajo Lab.

Soft Device Science

Associate Professor
Shusaku Imajo

Keywords

Organic conductors, π -electron quantum phenomena,
Thermodynamic measurements,
Physical property measurements under extreme conditions

e-mail imajo@edu.k.u-tokyo.ac.jp

TEL 04-7136-3790



Uchida & Nakanishi Lab.

Energy-conversion Quantum Science

Professor
Ken-ichi Uchida

Keywords

Spintronics, Spin caloritronics, Thermoelectrics,
Thermal engineering

e-mail kuchida@edu.k.u-tokyo.ac.jp

TEL 029-859-2062(NIMS) 04-7136-3756



Uchida & Nakanishi Lab.

Energy-conversion Quantum Science

Associate Professor
Yusuke Nakanishi

Keywords

Nanomaterials science, Low-dimensional materials,
Electron microscopy, Energy conversion

e-mail naka24ysk@edu.k.u-tokyo.ac.jp

TEL 070-1265-0561



Suzuki & Y. Yamashita Lab.

Molecular Ionics

Professor
Kosuke Suzuki

Keywords

Inorganic-organic hybrid materials, Molecular synthesis,
Molecular ionics, Energy conversion

e-mail ksuzuki@g.ecc.u-tokyo.ac.jp

TEL 04-7136-3786



Suzuki & Y. Yamashita Lab.

Molecular Ionics

Professor
Yu Yamashita

Keywords

Molecular ion, Organic semiconductor, Solution process,
Thin-film process

e-mail yu-yamashita@edu.k.u-tokyo.ac.jp

TEL 04-7136-3766

Materials Design and Processing



Ito Lab.

Process Science for Advanced Materials

Associate Professor
Tsuyohito Ito

Keywords

Plasma materials processing, Laser-induced processing,
Non-equilibrium, Interfacial processing,
Nano-composite materials

e-mail tsuyohito@k.u-tokyo.ac.jp

TEL 04-7136-3782



Mitarai Lab.

High-Temperature Materials Design

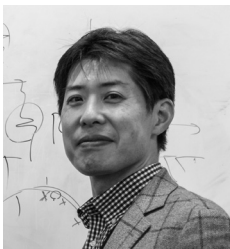
Professor
Yoko Mitarai

Keywords

Jet engine materials, Design of high-temperature alloys,
Processing, Mechanical properties, Creep

e-mail mitarai.yoko@edu.k.u-tokyo.ac.jp

TEL 04-7136-3783



Kita Lab.

Nano-Space Function Design

Professor
Koji Kita

Keywords

Advanced power devices, Near-interface nanoregion
Oxide thin films, Widegap semiconductors

e-mail kita@edu.k.u-tokyo.ac.jp

TEL 04-7136-5456



M. Yamashita Lab.

Advanced Measurements

Associate Professor

Minoru Yamashita

Keywords

Quantum spin liquid, Superconductivity,
Developments of ultra-low temperature equipments

e-mail my@issp.u-tokyo.ac.jp

TEL 04-7136-3350



Lippmaa Lab.

Diverse Condensed Matter Science

Professor

Mikk Lippmaa

Keywords

Oxide, Thin, Film, Surface, Interface

e-mail lippmaa@issp.u-tokyo.ac.jp

TEL 04-7136-3315



K. Inoue Lab.

Diverse Condensed Matter Science

Professor

Keiichi Inoue

Keywords

Photoreceptive protein, Advanced biological molecular spectroscopy,
Development of new biomolecular tools, Deep learning

e-mail inoue@issp.u-tokyo.ac.jp

TEL 04-7136-3230

*2 No recruitment for Doctoral course students



Takagi Lab.

Diverse Condensed Matter Science

Associate Professor

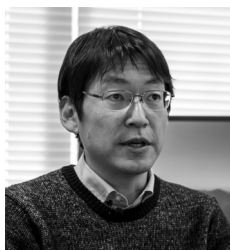
Rina Takagi

Keywords

New material development, Control of many-body nanostructure,
Strongly correlated electron systems, Crystal synthesis

e-mail rina.takagi@issp.u-tokyo.ac.jp

TEL 04-7136-3245



Okamoto Lab.

Materials Design

Professor

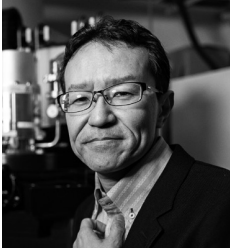
Yoshihiko Okamoto

Keywords

Crystalline, Solids, New Materials,
Exotic Quantum Phenomena, Electronic Functions

e-mail yokamoto@issp.u-tokyo.ac.jp

TEL 04-7136-3250



Yamaura Lab.

Materials Design

Associate Professor
Jun-ichi Yamaura

Keywords

Multimodal structural physics, Novel quantum solids,
Functional materials

e-mail jyamaura@issp.u-tokyo.ac.jp

TEL 04-7136-3252



Hirose Lab.

Materials Design

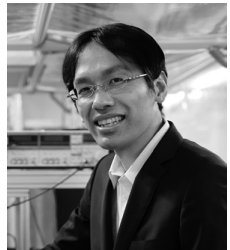
Associate Professor
Takashi Hirose

Keywords

Organic Materials, Chirality,
Circularly Polarized Luminescence, Molecular Wires

e-mail thirose@issp.u-tokyo.ac.jp

TEL 04-7136-3444



Miwa Lab.

Nanoscale Quantum Science

Associate Professor
Shinji Miwa

Keywords

Quantum materials spintronics, Chiral molecular spintronics,
Operando spectroscopy

e-mail miwa@issp.u-tokyo.ac.jp

TEL 04-7136-3300



Matsuda Lab.

International MegaGauss Science

Professor
Yasuhiro H. Matsuda

Keywords

Ultra-high magnetic fields, Strongly correlated electrons,
Quantum spin systems, Magnetic field-induced phase transitions

e-mail ymatsuda@issp.u-tokyo.ac.jp

TEL 04-7136-5329



Miyata Lab.

Ultrahigh Magnetic Field Science

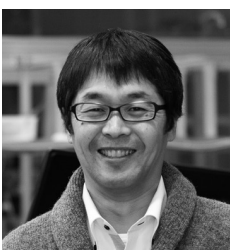
Associate Professor
Miyata Atsuhiko

Keywords

Ultra-high magnetic fields, Magneto-optics,
Quantum magnets, Magnet technology

e-mail a-miyata@issp.u-tokyo.ac.jp

TEL 04-7136-5531



Okazaki Lab.

Laser and Synchrotron

Associate Professor
Kozo Okazaki

Keywords

Photoemission spectroscopy, Superconductivity,
Strongly correlated electron system

e-mail okazaki@issp.u-tokyo.ac.jp

TEL 04-7136-3355



Harada Lab.

Synchrotron Radiation Science

Professor

Yoshihisa Harada

Keywords

Synchrotron radiation, Soft X-ray emission spectroscopy,
Electronic states, Solution chemistry

e-mail harada@issp.u-tokyo.ac.jp

TEL [Harima] 0791-58-0802-3966
[Kashiwa] 04-7136-3401



Masuda Lab.

Neutron Science

Professor

Takatsugu Masuda

Keywords

Quantum magnet, Frustrated magnet, Topological magnon,
Neutron scattering

e-mail masuda@issp.u-tokyo.ac.jp

TEL 04-7136-3415



Mayumi Lab.

Neutron Science

Associate Professor

Koichi Mayumi

Keywords

Polymer, Soft matter, Neutron scattering

e-mail kmayumi@issp.u-tokyo.ac.jp

TEL 04-7136-3418

Concurrent position (Information Technology Center)



Nagai Lab.

Interdisciplinary Information Science

Associate Professor

Yuki Nagai

Keywords

Computational physics, Condensed matter theory,
Machine learning

e-mail nagai.yuki@mail.u-tokyo.ac.jp

TEL 080-7318-9755

Synchrotron Radiation Research (SPRING-8)



I. Inoue Lab.

Synchrotron Radiation Science

Associate Professor

Ichiro Inoue

Keywords

Synchrotron radiation, X-ray free-electron laser,
Ultrafast science, Nonlinear optics

e-mail ichiro.inoue@edu.k.u-tokyo.ac.jp

TEL 090-6624-8413

Master's course, Ordinary Examination and Special Selection for Applicants with Overseas Education, Schedule A

Selection method

Admission decision will be made based on the submitted documents and the results of the written/oral examinations.

1. Application Period from Thursday, June 4 to Wednesday, June 10, 2026.

To apply, follow the procedures on the Online Application Site. Please access the online application from the Information on Entrance Examinations page on the GSFS website <https://www.k.u-tokyo.ac.jp/en/exam/info/>.

Please read carefully "Guidelines for Applicants to the 2027 Master's Course, Graduate School of Frontier Sciences, The University of Tokyo", which is uploaded on the GSFS website <https://www.k.u-tokyo.ac.jp/en/exam/info/>.

2. Written Examinations

(1) Foreign languages (English)

Submit TOEFL or TOEIC scores. For TOEFL, only official scores of TOEFL-iBT or TOEFL iBT® Home Edition are valid, and only Reading and Listening scores are taken. For TOEIC, only official scores of TOEIC® Listening & Reading public test are valid. Reading and Listening scores are taken. Regarding the official TOEFL and TOEIC scores, refer to "7. English Score Report" in "Guidelines for Applicants to the 2027 Master's Program Graduate School of Frontier Sciences The University of Tokyo", and submit the official scores to the Graduate School of Frontier Sciences by noon on Thursday, August 6, 2026

(2) Specialized Subjects

Choose three questions and answer them out of three fields of physics (classical mechanics, electromagnetics/optics, quantum mechanics, thermodynamics/statistical mechanics, condensed matter physics, experimental physics, etc...), chemistry (physical chemistry, inorganic chemistry, analytical chemistry, organic chemistry, etc...), and materials science (thermodynamics/phase diagram, material structure, transport phenomenology/reaction theory, materials physics, materials chemistry, materials process, materials theory, materials design, etc...). Three questions are provided from each of the three fields. (You may choose three questions from two or more fields.)

The written examination is allocated 75 points for foreign languages and 300 points for specialized subjects. Each score and its total score will be evaluated.

3. Oral examination

An oral examination tests the qualifications appropriate for a graduate student. Details of the oral examination will be noticed by e-mail.

4. Examination Schedule

(1) 1st-stage examination

Subject	Date	Venue (a)
Specialized subject	Tuesday, August 18, 2026 13 :40 ~ 15 :55	Main conference room, 6F Kashiwa Research Complex

(2) 2nd-stage examination (b)

Subject	Date	Venue (a)
Oral examination	Monday, August 24, 2026	Online (c)

(a) Details of the examination venue will be notified by e-mail. For the written examination on Tuesday, August 18, please arrive with plenty of time to avoid being late.

(b) 2nd-stage examination will be conducted only for those who passed the 1st-stage examination.

Successful applicants of the 1st-stage examination will be notified by e-mail around 16:00 pm on Friday, August 21.

- (c) Be sure to participate in the preliminary connection test on Saturday, August 22. If you do not participate in the preliminary connection test and have connection problems on the day of the test, we will not take remedial measures such as retesting.

After all examinations are completed, the informal decision will be sent by e-mail on Monday, August 24. An orientation session for prospective successful applicants will be held on Monday, August 31. During this session, applicants will have interviews with prospective supervisors to confirm their academic suitability and discuss supervision policies after enrollment. As this session constitutes part of the admission procedure, attendance is mandatory. The final admission results will be announced on Wednesday, September 2, following deliberation by the Graduate School.

5. Application Submission

See the List of Application Documents (Master's course) on page 11. Applicants are required to complete the Laboratory Preference Form (<https://forms.gle/wutKBhEkqS3KrFB3A>), indicating up to five preferred laboratories in order of priority (from first to fifth choice), and submit it together with the application documents.

Notes

- (1) Applicants who wish to be assigned to other laboratories if their requests are not fulfilled should also list the names of additional laboratories (6th choice and beyond).
- (2) Changes in the order of preference for laboratories after submission are not permitted.
Please fill in the form after careful consideration. Please refer to the Introduction of Faculty Members in this guideline, the Department of Advanced Materials Science homepage <https://www.k.u-tokyo.ac.jp/materials/en/>, and the orientation for entrance examination. It is also possible to visit the laboratory of your choice. Please also refer to the orientation for the Institute for Solid State Physics. https://www.issp.u-tokyo.ac.jp/index_en.html. Applicants should refer to "Guidelines for Applicants to the 2027 Master's Course Graduate School of Frontier Sciences The University of Tokyo", and may make a contact with the preferred thesis advisor to discuss research content before application.
However, even if you are unable to consult with the professor in advance, this does not prevent you from application.

6. Special Selection for Applicants with Overseas Education

Please refer to "Guidelines for Applicants to the 2027 Master's Course Graduate School of Frontier Sciences The University of Tokyo" for application eligibility. Before applying, be sure to contact the preferred thesis advisor (your 1st choice faculty member). Convenience such as English translation of the questions will be provided. Answers may be in English.

7. Application of October 2026 Admission

Those who meet the application requirements can apply for October 2026 Admission.

8. Miscellaneous

- (1) It is possible to inquire about the research content you want to do in the Master's course with the faculty member you wish to be supervised before applying. Please note that we cannot respond to inquiries after the application has been submitted.
- (2) If you have any questions about the entrance examination for this department, please contact the Department of Advanced Materials Science (E-mail: ams-office@ams.k.u-tokyo.ac.jp).
- (3) Please carefully read "Guidelines for Applicants to the 2027 Master's Course Graduate School of Frontier Sciences The University of Tokyo", and this guideline. If you have any questions, please contact the Student Affairs Team using the contact form.
For further details, please refer to the Graduate School of Frontier Sciences Admissions Information website: <https://www.k.u-tokyo.ac.jp/exam/info/>
- (4) Past exam questions (Japanese version only) in the fields of physics, chemistry, and materials science (selective) are published on the website <https://www.k.u-tokyo.ac.jp/materials/en/>. If you wish to have the English version, please contact the above (2).
- (5) Use the List of Application Documents (Master's course) to confirm that there are no deficiencies in the application document.

List of Application Documents (Master' s course)

Application Submission: Master' s course

Documents requested from GSFS: please refer to 6. Application Submission section in "Guidelines for Applicants to the 2027 Master' s Course Graduate School of Frontier Sciences The University of Tokyo" , which is uploaded on the GSFS website <https://www.k.u-tokyo.ac.jp/en/exam/info/> .

Inquiry to Student Affairs Team, Graduate School of Frontier Sciences using the contact form.

Documents requested from the Department of Advanced Materials Science.

Inquiry to the Department of Advanced Materials Science (E-mail: ams-office@ams.k.u-tokyo.ac.jp).

	Application Submission	Applicant	Submission deadline	Submission Method
①	Inquiry Sheet (Master' s course)	All	Application period June 4 - June 10, 2026	Fill in the required information and submit it via the designated Google Form.
②	Japanese language proficiency certificate	Only if you have a certificate	Application period June 4 - June 10, 2026	Upload the PDF file to the Online Application Site.
③	Research / work balance plan	Those who plan to enroll while being employed by a company, government agency, or othe organization	Application period June 4 - June 10, 2026	Upload the PDF file to the Online Application Site.
④	TOEFL or TOEIC score sheet	All	noon, August 6, 2026	<p>[For TOEFL]</p> <ul style="list-style-type: none"> • Test Data Scores of TOEFL-iBT or TOEFL iBT® Home Edition can be adopted as submitted scores (My BEST Scores are not adopted). • Only the scores of Reading and Listening are referenced. • Upload the PDF file of "Test Taker Score Report" to the Online Application Site. • After consulting the application guidelines, applicants must request ETS to send their official score report directly to the Graduate School. • For further details, refer to the instruction in the Guideline of GSFS. <p>[For TOEIC]</p> <ul style="list-style-type: none"> • Official scores of TOEIC® Listening & Reading public test can be adopted as submitted scores (TOEIC IP Test (Institutional Program) is not valid). • The scores of Reading and Listening are referenced. • Upload the PDF file of "Official Score Certificate" to the Online Application Site. • For further details, refer to the instruction in the Guideline of GSFS.

Department of Advanced Materials Science (AMS website) <https://www.k.u-tokyo.ac.jp/materials/en/exam/>

Doctoral course, Ordinary Examination and Special Selection for Applicants with Overseas Education, Schedule A

Selection Method

Admission decision will be made based on the submitted documents and the results of the written/oral examinations.

1. Application Period From Thursday, June 4 to Wednesday June 10, 2026.

To apply, follow the procedures on the online application site. Please access the online application from the Information on Entrance Examinations page on the GSFS website <https://www.k.u-tokyo.ac.jp/en/exam/info/>.

Please read carefully "Guidelines for Applicants to the 2027 Doctoral Course, Graduate School of Frontier Sciences, The University of Tokyo", which is uploaded on the GSFS website <https://www.k.u-tokyo.ac.jp/en/exam/info/>.

2. Written Examinations

(1) Foreign languages (English)

Submit TOEFL or TOEIC scores. For TOEFL, only official scores of TOEFL-iBT or TOEFL iBT® Home Edition are valid, and only Reading and Listening scores are taken. For TOEIC, only official scores of TOEIC® Listening & Reading public test are valid. Reading and Listening scores are taken. Regarding the official TOEFL and TOEIC scores, refer to "7. English Score Report" in "Guidelines for Applicants to the 2027 Doctoral Course Graduate School of Frontier Sciences The University of Tokyo", and submit the official scores to the Graduate School of Frontier Sciences by noon on Thursday, August 6, 2026. The TOEFL or TOEIC score sheet must be submitted unless you have completed or are expected to complete a Master's course at The University of Tokyo.

(2) Specialized Subjects

Individual questions about specialized academic subjects will be given by your preferred supervisor to those who have completed or are expected to complete a Master's course in Department of Advanced Materials Science. Other applicants will be qualified either by the examination subject in the field of physics, chemistry, or materials science (selective), or by individual questions created by your preferred supervisor about specialized academic subjects. Details of specialized subjects will be notified individually by e-mail.

3. Oral examination

An oral examination will be conducted to test the specialized knowledge appropriate for a Doctoral course student. Details of the oral examination will be sent individually by e-mail.

[For those who are expected to complete the Master's course in this department]

The first oral examination will be based on either the Master's interim presentation or the Master's thesis presentation, which will be held in July 2026 in this department. The second oral examination will be conducted on Tuesday, August 25, 2026. In this examination, applicants must give a 5-minute presentation on their research to date and prospects for research in the Doctoral course, followed by a 10-minute Q&A session.

[Except for those who are expected to complete the Master's course in this department]

The oral examination will be conducted only for applicants who pass the written examination. The oral examination will be conducted on Tuesday, August 25, 2026. Applicants must present their research to date and research prospects in the Doctoral course. Those who have completed the Master's course (or are expected to complete it) before September 2026 should prepare a 20-minute presentation about the content of Master's thesis (or equivalent research content), and submit your Master's thesis (or a copy) together with an abstract of your research (A4, 3 pages). Those who are expected to complete the Master's course after October 2026 should prepare a 20-minute presentation about your research contents so far, and submit an abstract of your presentation (A4, 3 pages). The presentation will be followed by a 10-minute Q&A session.

4. Examination Schedule

Subject	Date	Venue (a)
Specialized subject	Tuesday, August 18, 2026 13 :40 ~ 15 :55	Main conference room, 6F Kashiwa Research Complex
Oral examination	Tuesday, August 25, 2026	Online (b)

- (a) Details of the examination venue will be notified by e-mail. For the written examination on Tuesday, August 18, please arrive with plenty of time to avoid being late.
- (b) Be sure to participate in the preliminary connection test on Saturday, August 22. If you do not participate in the preliminary connection test and have connection problems on the day of the test, we will not take remedial measures such as retesting. Details of the time of the oral examination will be sent individually by e-mail.

5. Application Submission

See the List of Application Documents (Doctoral course Schedule A) on page 16. Submit the Inquiry Sheet (Doctoral course Schedule A) online including the preferred thesis advisor, together with the application documents. Please download the pdf of the Inquiry Sheet (Doctoral course Schedule A) from the entrance examination information page <https://www.k.u-tokyo.ac.jp/materials/en/exam/>.

Notes

Applicants should refer to "Guidelines for Applicants to the 2027 Doctoral Course Graduate School of Frontier Sciences The University of Tokyo", and must make a contact with the desired faculty member to discuss research content before application.

6. Special Selection for Applicants with Overseas Education

Please refer to "Guidelines for Applicants to the 2027 Doctoral Course Graduate School of Frontier Sciences The University of Tokyo" for application eligibility. Convenience such as English translation of the questions will be provided. Answers may be in English.

7. Application of October 2026 Admission

Those who meet the application requirements can apply for October 2026 Admission.

8. Miscellaneous

- (1) It is possible to inquire about the research content you want to do in the Doctoral course with the faculty member you wish to be supervised before applying. Please note that we cannot respond to inquiries after the application has been submitted.
- (2) If you have any questions about the entrance examination for this department, please contact the Department of Advanced Materials Science (E-mail: ams-office@ams.k.u-tokyo.ac.jp).
- (3) Please carefully read "Guidelines for Applicants to the 2027 Doctoral Course Graduate School of Frontier Sciences The University of Tokyo", and this guideline. If you have any questions, please contact the Student Affairs Team using the contact form.
For further details, please refer to the Graduate School of Frontier Sciences Admissions Information website: <https://www.k.u-tokyo.ac.jp/exam/info/>
- (4) Past exam questions (Japanese version only in the fields of physics, chemistry, and materials science) (selective) are published on the website <https://www.k.u-tokyo.ac.jp/materials/en/exam/>. the English version, please contact the above (2).
- (5) Use the List of Application Documents (Doctoral course Schedule A) to confirm that there are no deficiencies in the application document.

Doctoral course, Special Selection for Applicants with Professions (Only for Schedule A)

Application requirements and documents to be submitted

In addition to the application qualifications listed in the application requirements, one or more peer-reviewed papers (The papers must be written in English and the applicant must be the first or co-author of the papers) must be published or accepted for publication. In addition to the documents listed in the application guidelines, submit a Master's thesis or alternative, the abstract of the thesis, and a list of research achievements (a list of papers, conference presentations, patents, etc.) (see the List of Application Documents (Doctoral course Schedule A)).

Selection Method

To apply, follow the procedures on the online application site. Please access the online application from the Information on Entrance Examinations page on the GSFS website <https://www.k.u-tokyo.ac.jp/en/exam/info/>.

Please read carefully "Guidelines for Applicants to the 2027 Doctoral Course, Graduate School of Frontier Sciences, The University of Tokyo", which is uploaded on the GSFS website <https://www.k.u-tokyo.ac.jp/en/exam/info/>.

1. Application Period From Thursday, June 4 to Wednesday June 10, 2026.

To apply, follow the procedures on the online application site. Please access the online application from the Information on Entrance Examinations page on the GSFS website <https://www.k.u-tokyo.ac.jp/en/exam/info/>.

Please read carefully "Guidelines for Applicants to the 2027 Doctoral Course, Graduate School of Frontier Sciences, The University of Tokyo", which is uploaded on the GSFS website <https://www.k.u-tokyo.ac.jp/en/exam/info/>.

2. Written Examinations

Foreign languages (English)

Submit TOEFL or TOEIC scores. For TOEFL, only official scores of TOEFL-iBT or TOEFL iBT® Home Edition are valid, and only Reading and Listening scores are taken. For TOEIC, only official scores of TOEIC® Listening & Reading public test are valid. Reading and Listening scores are taken. Regarding the official TOEFL and TOEIC scores, refer to "7. English Score Report" in "Guidelines for Applicants to the 2027 Doctoral Course Graduate School of Frontier Sciences The University of Tokyo", and submit the official scores to the Graduate School of Frontier Sciences by noon on Thursday, August 6, 2026. The TOEFL or TOEIC score sheet must be submitted unless you have completed or are expected to complete a Master's course at The University of Tokyo.

3. Oral examination

An oral examination that tests the specialized knowledge appropriate for a Doctoral course graduate student.

Please prepare a 20-minute presentation on past research and future research plans. The presentation will be followed by a 10-minute Q&A session. Submit an abstract of your presentation (A4 paper, 3 pages).

4. Examination Schedule

Subject	Date	Venue (a)
Oral examination	Tuesday, August 25, 2026	Online

(a) Details of the examination will be notified by e-mail. Be sure to participate in the preliminary connection test on Saturday, August 22. If you do not participate in the preliminary connection test and have connection problems on the day of the test, we will not take remedial measures such as retesting.

5. Application Submission

See the List of Application Documents (Doctoral course Schedule A) on page16. Submit the Inquiry Sheet (Doctoral course Schedule A) online including a desired faculty member together with the application documents. Please download the pdf of the Inquiry Sheet (Doctoral course Schedule A) from the entrance examination information page <https://www.k.u-tokyo.ac.jp/materials/en/exam/>.

Notes

Applicants should refer to “Guidelines for Applicants to the 2027 Doctoral Course Graduate School of Frontier Sciences The University of Tokyo”, and must make a contact with the preferred thesis advisor to discuss research content before application.

6. Application of October 2027 Admission

Those who meet the application requirements can apply for October 2027 Admission.

7. Miscellaneous

- (1) It is possible to inquire about the research content you want to do in the Doctoral course with the faculty member you wish to be supervised before applying. Please note that we cannot respond to inquiries after the application has been submitted.
- (2) If you have any questions about the entrance examination for this department, please contact the Department of Advanced Materials Science Science (E-mail: ams-office@ams.k.u-tokyo.ac.jp).
- (3) Please carefully read “Guidelines for Applicants to the 2027 Doctoral Course Graduate School of Frontier Sciences The University of Tokyo”, and this guideline. If you have any questions, please contact the Student Affairs Team using the contact form.
For further details, please refer to the Graduate School of Frontier Sciences Admissions Information website: <https://www.k.u-tokyo.ac.jp/exam/info/>
- (4) Use the List of Application Documents (Doctoral course Schedule A) to confirm that there are no deficiencies in the application document.

List of Application Documents (Doctoral course Schedule A)

Application Submission: Doctoral course Schedule A

Documents requested from GSFS: please refer to 6. Application Submission section in "Guidelines for Applicants to the 2027 Doctoral Course Graduate School of Frontier Sciences The University of Tokyo", which is uploaded on the GSFS website <https://www.k.u-tokyo.ac.jp/en/exam/info/>. Inquiry to Student Affairs Team, Graduate School of Frontier Sciences using the contact form.

Documents requested from the Department of Advanced Materials Science.

Inquiry to the Department of Advanced Materials Science (E-mail: ams-office@ams.k.u-tokyo.ac.jp).

	Application Submission	Applicant	Submission deadline	Submission Method
①	Inquiry Sheet (Doctoral course Schedule A)	All	Application period June 4 - June 10, 2026	Download the PDF format from AMS website and upload it to the Online Application Site.
②	Japanese language proficiency certificate	Only if you have a certificate	Application period June 4 - June 10, 2026	Upload the PDF file to the Online Application Site.
③	Research / work balance plan	Those who plan to enroll while being employed by a company, government agency, or other organization	Application period June 4 - June 10, 2026	Upload the PDF file to the Online Application Site.
④	List of research achievements	All applicants for Special Selection for Applicants with Professions	Application period June 4 - June 10, 2026	Upload the pdf that includes a list of papers, conference presentations, patents etc... to the Online Application Site.
⑤	TOEFL or TOEIC score sheet	All	noon, August 6, 2026	<p>[For TOEFL]</p> <ul style="list-style-type: none"> • Test Data Scores of TOEFL-iBT or TOEFL iBT® Home Edition can be adopted as submitted scores (My BEST Scores are not adopted). • Only the scores of Reading and Listening are referenced. • Upload the PDF file of "Test Taker Score Report" to the Online Application Site. • After consulting the application guidelines, applicants must request ETS to send their official score report directly to the Graduate School. • For further details, refer to the instruction in the Guideline of GSFS. <p>[For TOEIC]</p> <ul style="list-style-type: none"> • Official scores of TOEIC® Listening & Reading public test can be adopted as submitted scores (TOEIC IP Test (Institutional Program) is not valid). • The scores of Reading and Listening are referenced. • Upload the PDF file of "Official Score Certificate" to the Online Application Site. • For further details, refer to the instruction in the Guideline of GSFS.
⑥	Master's thesis or its equivalent	All*	noon, August 12, 2026	Upload the PDF file to the Online Application Site.
⑦	Abstract of presentation in oral examination (A4 paper 3 pages)	All**	noon, August 12, 2026	In the abstract (A4 paper 3pages), please summarize your Master's course research (or other past research) and your perspectives of the research in the doctoral course after the enrollment.
⑧	Abstract of Master's thesis	All applicants for Special Selection for Applicants with Professions	noon, August 12, 2026	Upload the PDF file to the Online Application Site.

Department of Advanced Materials Science (AMS website) <https://www.k.u-tokyo.ac.jp/materials/en/exam/>

※Those who are expected to complete their Master's course after October 2026 will be exempted from submission.

※※Those who are expected to complete their Master's course in this department will be exempted from submission

Inquiry Sheet (Doctoral course Schedule A)

Applicants should submit this Inquiry Sheet online together with the application documents.

Department of Advanced Materials Science,
Graduate School of Frontier Sciences, The University of Tokyo

Applicant's Full Name	
Name of preferred thesis advisor	
Summary of your research topic and plan	
Check the box if you want English translation of examination questions <input type="checkbox"/> ※Even if an English translation is desired, Japanese question booklet will be provided to all examinees	

Doctoral course, Special Selection for Applications with Overseas Education, Schedule B

Selection Method

Please refer to "Guidelines for Applicants to the 2027 Doctoral Course Graduate School of Frontier Sciences The University of Tokyo" for application eligibility. Convenience such as English translation of the questions will be provided. Answers may be in English. Admission decision will be made based on the submitted documents and the results of the written/oral examinations.

1. Application Period From Wednesday, November 11 to Tuesday, November 17, 2026.

To apply, follow the procedures on the online application site. Please access the online application from the Information on Entrance Examinations page on the GSFS website <https://www.k.u-tokyo.ac.jp/en/exam/info/>.

Please read carefully "Guidelines for Applicants to the 2027 Doctoral Course, Graduate School of Frontier Sciences, The University of Tokyo", which is uploaded on the GSFS website <https://www.k.u-tokyo.ac.jp/en/exam/info/>.

2. Written Examinations

(1) Foreign languages (English)

Submit TOEFL or TOEIC scores. For TOEFL, only official scores of TOEFL-iBT or TOEFL iBT® Home Edition are valid, and only Reading and Listening scores are taken. For TOEIC, only official scores of TOEIC® Listening & Reading public test are valid. Reading and Listening scores are taken. Regarding the official TOEFL and TOEIC scores, refer to "7.English Score Report" in "Guidelines for Applicants to the 2027 Doctoral Course Graduate School of Frontier Sciences The University of Tokyo", and submit the official scores to the Graduate School of Frontier Sciences by noon on Wednesday, January 6, 2027. The TOEFL or TOEIC score sheet must be submitted unless you have completed or are expected to complete a Master's course at The University of Tokyo.

(2) Specialized Subjects

Individual questions about specialized academic subjects will be given.

3. Oral examination

An oral examination that tests the specialized knowledge appropriate for a Doctoral course student. Describe your research and the prospects for research in the Doctoral course. Details of the oral examination will be sent individually by e-mail. Those who complete the Master's course (or are expected to complete it) before the end of March 2027 should prepare a 20-minute presentation about the content of Master's thesis (or equivalent research content), and submit your Master's thesis (or a copy) together with an abstract of your research (A4, 3 pages).

Those who are expected to complete the Master's course after April 2027 should prepare a 20-minute presentation about your research contents so far. The presentation will be followed by a 10-minute, Q&A session.

Submit an abstract of your presentation (A4, 3 pages).

4. Examination Schedule

Subject	Date	Venue (a)
Specialized subject	Monday, January 18, 2027 13 :40 ~ 15 :55	2F 2B6, Transdisciplinary Sciences Building, Kashiwa campus
Oral examination	Tuesday, January 26, 2027	Online (b)

(a) Details of the examination will be notified by e-mail. For the written examination on Monday January 18, 2027 please arrive with plenty of time to avoid being late.

- (b) Be sure to participate in the preliminary connection test on Saturday, January 23, 2027. If you do not participate in the preliminary connection test and have connection problems on the day of the test, we will not take remedial measures such as retesting. Details of the time of the oral examination will be sent individually by e-mail.

5. Application Submission

See the List of Application Documents (Doctoral course Schedule B) on page 20. Submit the Inquiry Sheet (Doctoral course Schedule B) online including the preferred thesis advisor together with the application documents. Please download the pdf of the Inquiry Sheet (Doctoral course Schedule B) from the entrance examination information page <https://www.k.u-tokyo.ac.jp/materials/en/exam/>.

Notes

Applicants should refer to “Guidelines for Applicants to the 2027 Doctoral Course Graduate School of Frontier Sciences The University of Tokyo”, and must make a contact with the preferred thesis advisor to discuss research content before application.

6. Application of April 2027 Admission

Those who meet the application requirements can apply for April 2027 Admission.

7. Miscellaneous

- (1) It is possible to inquire about the research content you want to do in the Doctoral course with the faculty member you wish to be supervised before applying. Please note that we cannot respond to inquiries after the application has been submitted.
- (2) If you have any questions about the entrance examination for this department, please contact the Department of Advanced Materials Science (E-mail: ams-office@ams.k.u-tokyo.ac.jp).
- (3) Please carefully read “Guidelines for Applicants to the 2027 Doctoral Course Graduate School of Frontier Sciences The University of Tokyo”, and this guideline. If you have any questions, please contact the Student Affairs Team using the contact form.
For further details, please refer to the Graduate School of Frontier Sciences Admissions Information website: <https://www.k.u-tokyo.ac.jp/exam/info/>
- (4) Use the List of Application Documents (Doctoral course Schedule B) to confirm that there are no deficiencies in the application document.

List of Application Documents(Doctoral course Schedule B)

Application Submission: Doctoral course Schedule B

Documents requested from GSFS: please refer to 6. Application Submission section in “Guidelines for Applicants to the 2027 Doctoral Course Graduate School of Frontier Sciences The University of Tokyo” , which is uploaded on the GSFS website <https://www.k.u-tokyo.ac.jp/en/exam/info/>.

Inquiry to Student Affairs Team, Graduate School of Frontier Sciences using the contact form.

Documents requested from the Department of Advanced Materials Science.

Inquiry to the Department of Advanced Materials Science (email: ams-office@ams.k.u-tokyo.ac.jp).

	Application Submission	Applicant	Submission deadline	Submission Method
①	Inquiry Sheet (Doctoral course Schedule B)	All	Application period November 11 - November 17, 2026	Download the PDF format from AMS website and upload it to the Online Application Site.
②	Japanese language proficiency certificate	Only if you have a certificate	Application period November 11 - November 17, 2026	Upload the PDF file to the Online Application Site.
③	Research / work balance plan	Those who plan to enroll while being employed by a company, government agency, or other organization	Application period November 11 - November 17, 2026	Upload the PDF file to the Online Application Site.
④	TOEFL or TOEIC score sheet	All	noon, January 6, 2027	<p>[For TOEFL]</p> <ul style="list-style-type: none"> • Test Data Scores of TOEFL-iBT or TOEFL iBT® Home Edition can be adopted as submitted scores (My BEST Scores are not adopted). • Only the scores of Reading and Listening are referenced. • Upload the PDF file of "Test Taker Score Report" to the Online Application Site. • After consulting the application guidelines, applicants must request ETS to send their official score report directly to the Graduate School. • For further details, refer to the instruction in the Guideline of GSFS. <p>[For TOEIC]</p> <ul style="list-style-type: none"> • Official scores of TOEIC® Listening & Reading public test can be adopted as submitted scores (TOEIC IP Test (Institutional Program) is not valid). • The scores of Reading and Listening are referenced. • Upload the PDF file of "Official Score Certificate" to the Online Application Site. • For further details, refer to the instruction in the Guideline of GSFS.
⑤	Master's thesis or its equivalent	All*	noon, January 13, 2027	Upload the PDF file to the Online Application Site.
⑥	Abstract of presentation in oral examination (A4 paper 3 pages)	All	noon, January 13, 2027	In the abstract (A4 paper 3pages), please summarize your Master's course research (or other past research) and your perspectives of the research in the doctoral course after the enrollment.

Department of Advanced Materials Science (AMS website) <https://www.k.u-tokyo.ac.jp/materials/en/exam/>

※Those who are expected to complete their Master's course after April 2027 will be exempted from submission.

Examination Guideline

1. Schedule

Please refer to the Examination Schedule in this guideline

2. Venue (see next page)

Transdisciplinary Science, GSFS/Research Complex, The University of Tokyo,
5-1-5 Kashiwanoha, Kashiwa, Chiba 277-8561

Access from Tokyo

- From "Ueno" or "Nippori" on the JR Yamanote Line to "Kashiwa" on the JR Joban Line
- From "Akihabara" on the JR Yamanote Line to "Kashiwanoha Campus" on the Tsukuba Express

Transportation access from the Kashiwa area

- 25 mins (3 mins by foot from "Todaimae" bus stop) from the west exit of "Kashiwa" on the JR Joban Line, take the Tobu Bus bound for Nishikashiwa 01/National Cancer Center (via Kashiwanoha Park)
- 30 mins by foot from the west exit of "Kashiwanoha Campus" on the Tsukuba Express, or 13 mins by Tobu Bus bound for "Nishikashiwa 03/Nagareyama Otakanomori Station East Exit" or "Nishikashiwa 04 or Nishikashiwa 10/Edogawadai Station East Exit" (3 mins by foot from "Todaimae" bus stop)
- 4 mins by taxi from the west exit of "Kashiwanoha Campus" on the Tsukuba Express
- 5 mins by taxi from the east exit of "Edogawadai" on the Tobu Urban Park Line

- (1) Details of the written and oral examinations will be notified separately by e-mail. Please frequently check the e-mail address registered at the time of application.
- (2) Examinees must enter and be seated in the designated examination room 40 minutes before the start of the examination for specialized subjects. If you are late for the scheduled time, please notify the examiner of each examination room.

3. Items

Be sure to bring your examination admission ticket, black pencil (or black mechanical pencil, etc.), eraser, pencil sharpener (desktop type not allowed) and scientific calculator. Clocks (with clock function only) and stopwatches are also permitted. The use of wearable devices such as smart glasses and smartwatches is strictly prohibited.

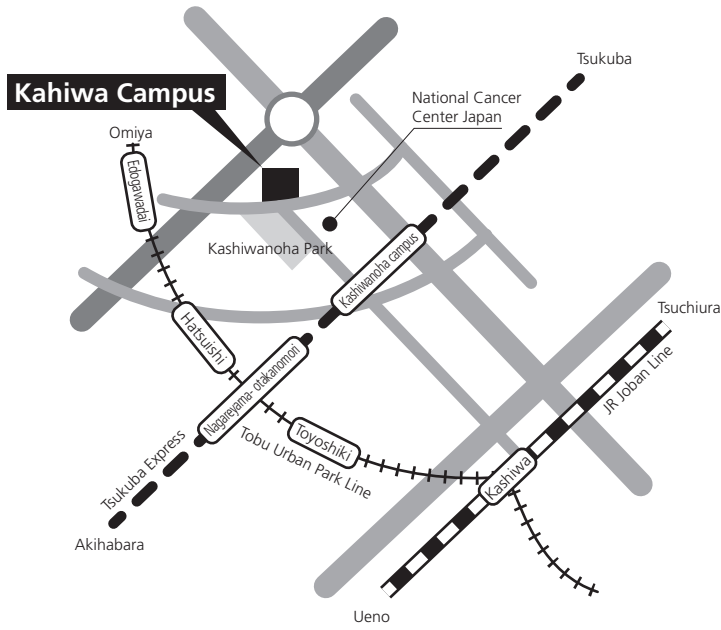
4. Oral examination

An oral examination will be conducted online using Zoom Meetings (hereafter, Zoom). Prepare a sufficiently high-speed network environment that enables online testing using video. Install Zoom on your own computer and familiarize yourself with how to operate it. Each applicant must prepare a personal computer with a camera to capture yourself, microphone, and speaker functions (camera, microphone, and speaker may be attached externally to PC). The use of headphones and earphones is prohibited.

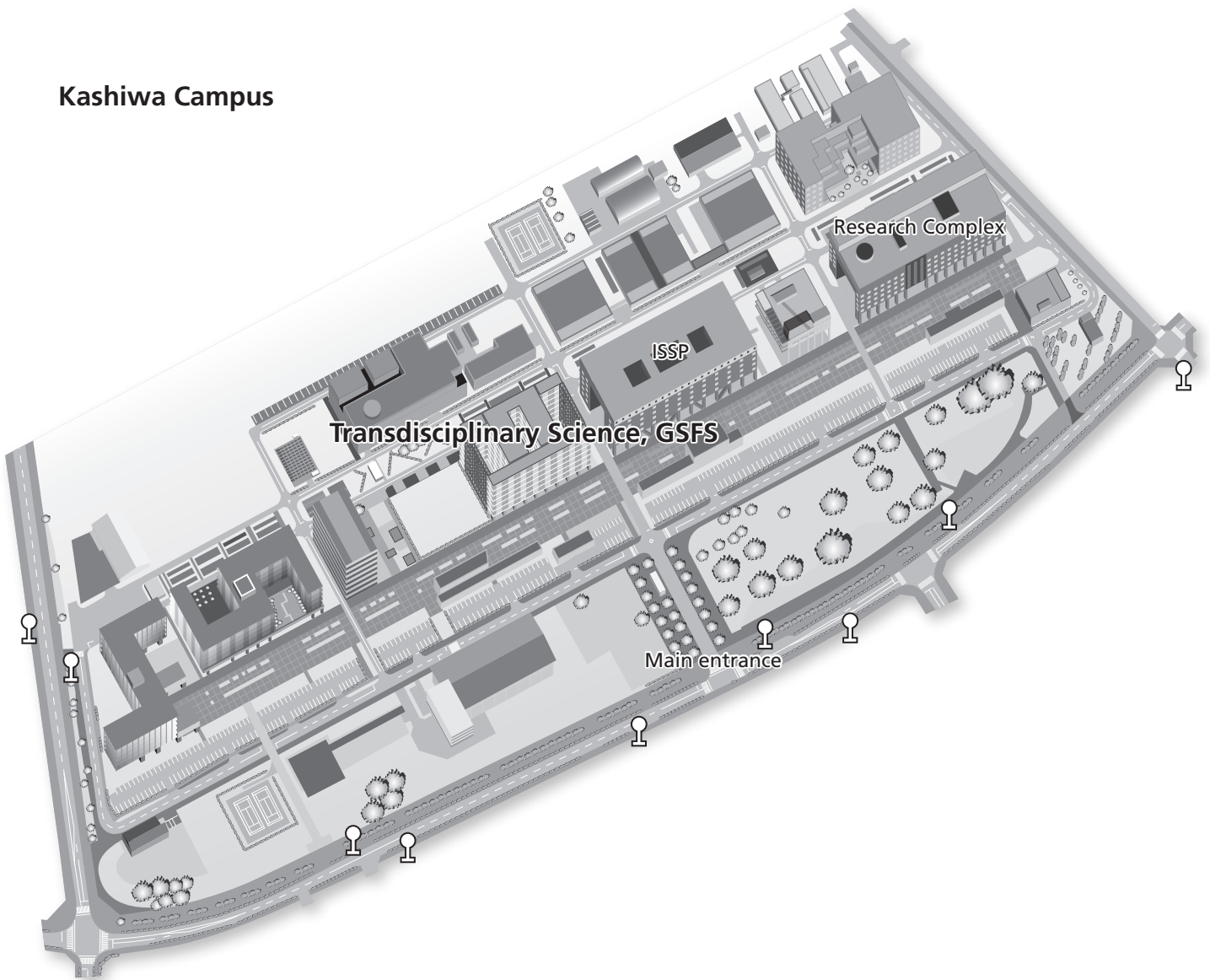
5. Notes for written examinations

- (1) You are not allowed to leave during the examination time even if you have completed your answers. For specialized subjects, it takes about 15 minutes to check and collect the answers after the examination time ends, but you are not allowed to leave during this time.
- (2) As a general rule, using a toilet during the examination is not permitted.
- (3) Turn off mobile phones, etc. during the exam (cannot be used as a clock).
- (4) Keep the examination admission ticket on the desk at all times during the examination.
- (5) Fill in your examinee number on each answer sheet. Do not write your name.
- (6) Fill out the answers on the prescribed form. If it is insufficient, it may be applied to the back side.
- (7) Even if you are unable to answer, you must enter your examinee number on the answer sheet and submit it.
- (8) As a general rule, questions about the content of the problem are not permitted. However, if there are any errors or inadequacies (such as typographical errors) in the question itself, please notify an examiner.
- (9) Do not take home the answer sheets and question booklets.

— Venue —



Kashiwa Campus



Inquiries and Contact Information

**Student Affairs Team, Graduate School of Frontier Sciences,
The University of Tokyo**

5-1-5 Kashiwanoha, Kashiwa City, Chiba 277-8561 Tel: 04-7136-4092
<https://www.k.u-tokyo.ac.jp/en/>

Website of Department of Advanced Materials Science:
<https://www.k.u-tokyo.ac.jp/materials/en/>