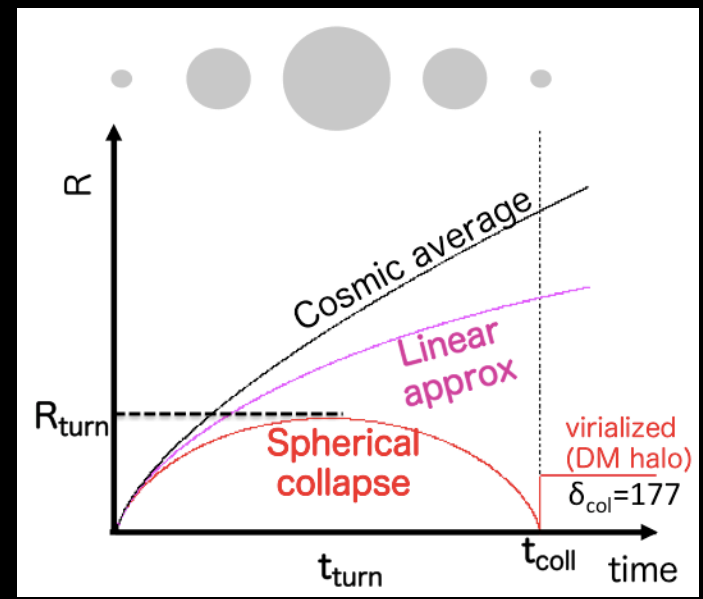
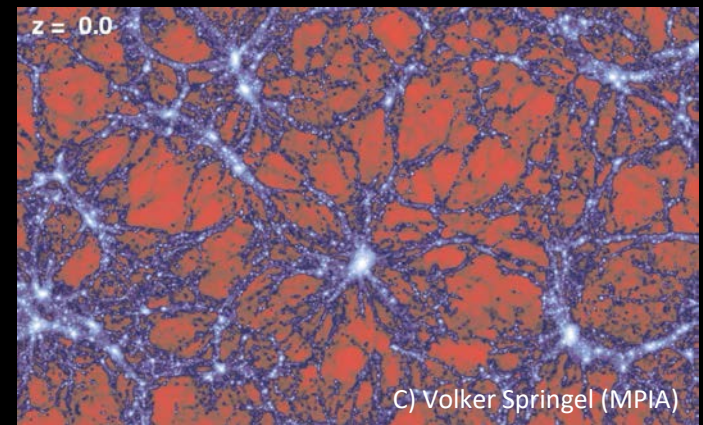
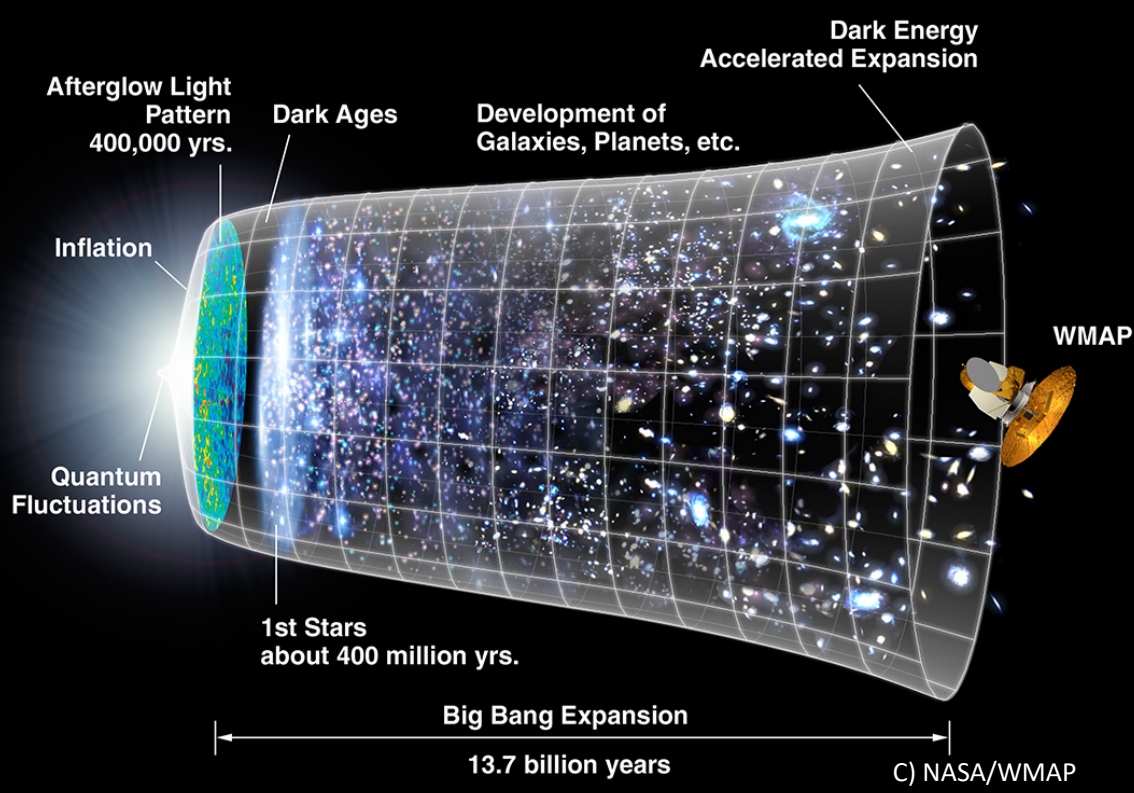


すばる望遠鏡データと深層学習を用いた 深宇宙の探索

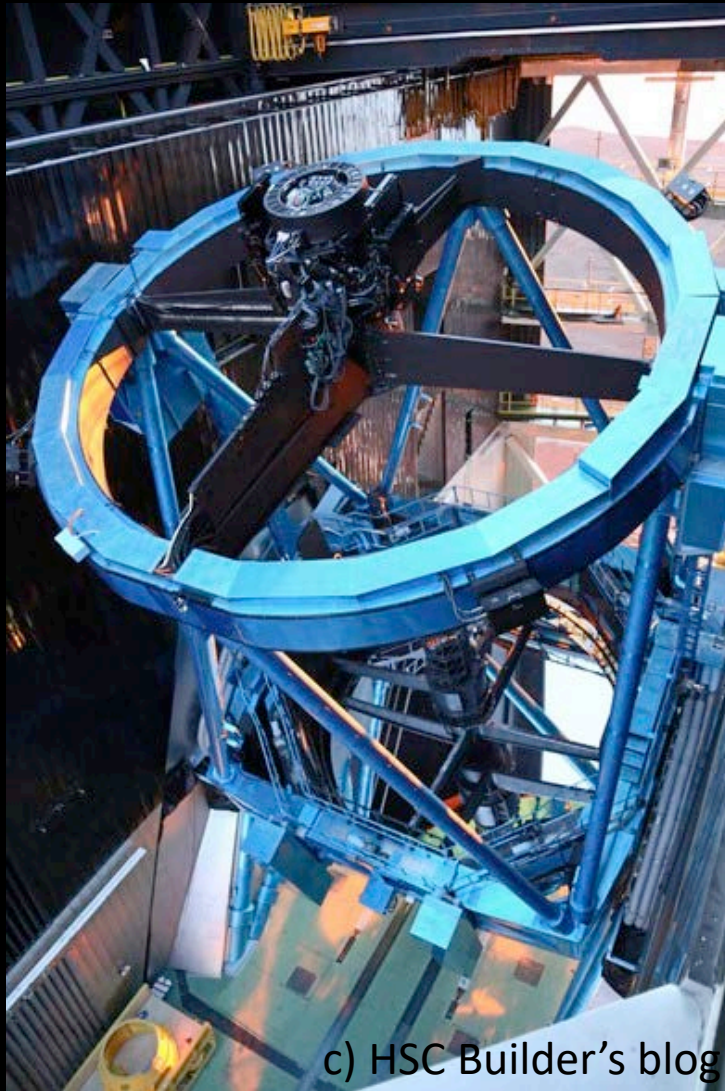
宇宙コース(1)

膨張宇宙での天体形成

宇宙進化

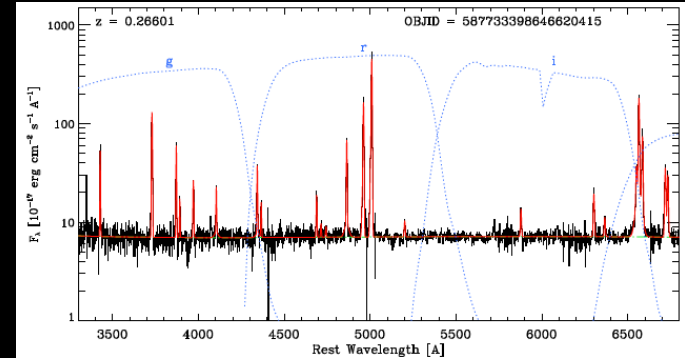


すばる望遠鏡データと深層学習で挑戦

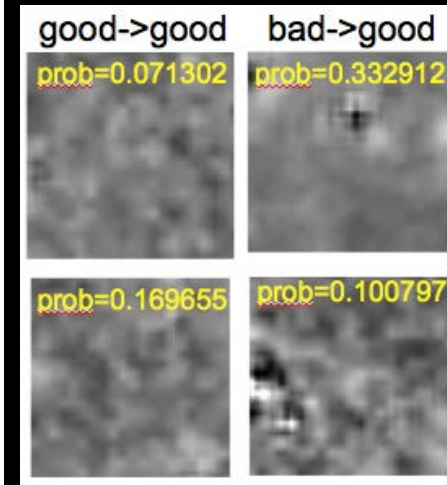
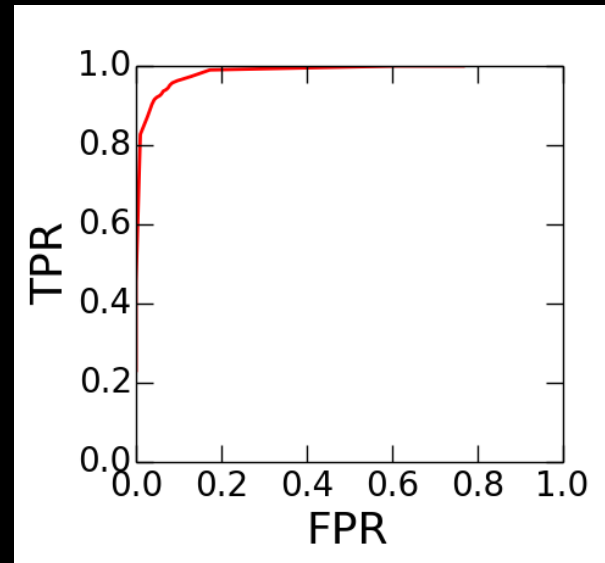


すばる望遠鏡+
可視光撮像装置HSC

銀河のスペクトル(星雲線)



深層学習を用いた画像解析



C) Yuichi Harikane (U. Tokyo)